

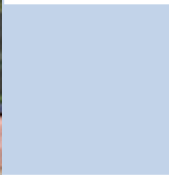


NPH USA.

Raising Children. Supporting Families.
Transforming Lives.

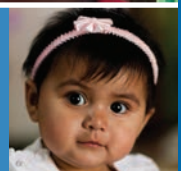
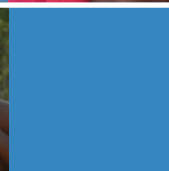
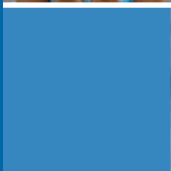
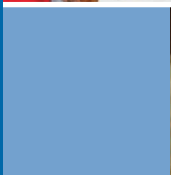
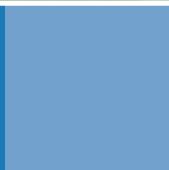


YOUR GUIDE TO SPONSORSHIP



When you help us
raise a child,
you transform
a life forever.
Thank you.

*Aurora Zacarias was raised at NPH Mexico
and now is a sponsor, business leader,
and NPH USA ambassador.*





Contents

Introduction 3

About NPH 4

Welcome to Our Family

 Nurturing Family Relationships 5

 A Continuum of Individualized Care 5

 Education and Service 5

 Our Homes 6

 A Typical Day 6

Communicating with Me

 Writing to Me 7

 Sponsor Correspondence Policy 8

 The Mail Process 9

 Helpful Phrases 11

 Visiting Me 12

Your Sponsorship Account

 Making Your Sponsorship Contributions 13

 Changes to Your Sponsorship 13



Introduction

Who We Are

NPH USA transforms the lives of vulnerable children in Latin America and the Caribbean by supporting the homes, health services and educational programs of Nuestros Pequeños Hermanos (NPH, Spanish for "Our Little Brothers and Sisters"). Together, we help children overcome poverty and become leaders in their own communities.

NPH USA, Federal Tax ID# 65-1229309, is a registered 501(c)(3) nonprofit corporation. Donations are tax deductible to the extent provided by law.



2 | 866.690.1703 • nphusa.org

Thank you

for sponsoring a child through NPH USA. Inside this guide you'll find helpful tips for connecting with your sponsored child and useful information about NPH USA and our child sponsorship program.

Your support is life-changing!

Whether your sponsored child lives at one of our residential care homes or with their family in one of the communities where we work, you are helping to provide a safe and loving home, an education, clothing, healthcare, and the values and skills to achieve a productive future and break the cycle of poverty.

A child needs love and encouragement every day of his or her life. As a sponsor you are a member of our global family. Our children and staff often refer to our sponsors as a *padrino* or *madrina* ("Godfather" or "Godmother"), because of the consistent encouragement and emotional support you can provide to your sponsored child. Through letters, emails and visits, you have the opportunity to develop a special life-long bond with your sponsored child that is sure to enrich your own life.





About NPH

Who We Serve

Founded in 1954 by Fr. William B. Wasson, NPH is fully supporting nearly 3,100 boys and girls in nine countries. An additional 3,200 community children receive scholarships, meals, health care and other support. More than 100,000 services are provided through community outreach programs each year.

Where We Work

Mexico

Opened in 1954

The main home in Miacatlán has a clinic, chapel, farms, and primary and secondary schools. There are homes and a vocational high school in Cuernavaca, and a home in Matamoros.

Guatemala

Opened in 1996

25 acres of land, farm, school (grades K-9), vocational workshops and clinic

El Salvador

Opened in 1999

K-9 school, vocational workshops, clinic, farm and a waste water treatment plant

Nicaragua

Opened in 1994

School (grades K-11), vocational workshops farms and greenhouse

Peru

Opened in 2004

37 acres of land, solar water heaters, water treatment system, playground, clinic, and therapy center

Haiti

Opened in 1987

The main home is on 15 acres at 5,000 feet above sea level in Kenscoff. It has a school (grades K-8) and farm. There is a pediatric hospital, plus rehabilitation centers, homes and schools in Tabarre.

Dominican Republic

Opened in 2003

50 acres of land, school (grades K-11) and gardens.

Honduras -

Opened in 1985

School (grades K-9), vocational workshops, farm, special homes for disabled children and elderly adults, and a surgery center

Bolivia

Opened in 2005

School (grades 1-6), garden and clinic

☞ National Director was raised at an NPH home.

866.690.1703 • nphusa.org | 3



Our Vision

We hope for a world without poverty where all children develop their unique potential becoming productive members of society serving their community.

Our Values



LOVE AND SECURITY: providing care, engagement and stability in preparation for a meaningful and productive life.



RESPONSIBILITY: learning to respond to the needs of others, both individually and collectively.



SHARING: developing kindness, empathy and care for others through what we say and do.



WORK: contributing to one's family and community on the path to independence.



FAITH AND SERVICE: putting Christian values into action.





Welcome to Our Family

As a sponsor, you are now part of your sponsored child's extended family, and ours!

At NPH, the children and youth often refer to themselves as *pequeños*, Spanish for "little ones." Through yearly updates, letters, and visits, you can witness the incredible impact that your emotional support and sponsorship gifts have on your sponsored child as they grow and thrive.

Nurturing Family Relationships

We encourage and support the bond that many of our *pequeños* have with their biological extended families. Regular Visitor Days throughout the year allow for extended family members to come to an NPH home and visit with the *pequeños*. Older youth have a free day each month when they can visit their family if they choose.

A Continuum of Individualized Care

Each child in our care is unique and has their own individual needs. Many have suffered from neglect, abuse, and the effects of extreme poverty. From the day they join our family they are treated with dignity and value. There is no fixed age at which children are asked to leave the NPH program. Instead, we provide the *pequeños* with individualized support to acquire the skills they need to live independently at their own pace.

Education and Service

NPH supports the unique educational background and goals of each child and provides access to quality education from preschool through University. Some youth will choose to leave NPH after secondary school to start working in a trade, while others may complete an advanced technical degree or study at a nearby university. All of our children are expected to complete a year of service to NPH before or after they have finished their higher educational pursuits. This year of service, or (*ano de servicio*) provides an opportunity for the older youth to give back to their NPH family by working with the younger children, serving in the kitchen, offices, school, or farm. During their year of service, they are fully supported by NPH.



Our Homes

The NPH homes are located near cities, making services and supplies easily accessible. At the same time, the homes are relatively isolated and have extensive grounds. This provides safety and security to children who may have never experienced either. Although home features vary from site to site, in general, each has:

- Family-style houses
- A kitchen and dining hall
- A chapel
- A clinic
- A farm and/or gardens
- A school
- Vocational workshops where children can learn trades such as carpentry and sewing

Each home strives to be self-sustaining by producing its own food and other necessities. For example, the NPH Honduras farm generates 1,500 fresh eggs and 80 gallons of milk each day, meeting the needs of all who live there, and youths in the vocational workshops make all of the home's fixtures and furniture, as well as the school uniforms worn by the children.



Learn more about the homes and see photos at nphusa.org/homes

A Typical Day

Each home follows the same basic schedule, although exact times vary by location and sometimes by age group.

5:30 a.m. Wake up
6:00 - 8:00 a.m. Chores and breakfast
8:00 a.m. - 1:00 p.m. School
1:00 - 1:30 p.m. Lunch
1:30 - 4:00 p.m. School
4:00 - 6:00 p.m. Chores, homework and play
6:00 - 6:30 p.m. Dinner
6:30 - 8:00 p.m. Shower and free time
8:00 p.m. Bedtime





Communicating with Me

In order to protect the privacy of both our sponsors and our children, connecting directly with your sponsored child outside of NPH communication channels is prohibited.

.....

Please do not send correspondence directly to your sponsored child. Our homes cannot accept any mail or gifts directly from sponsors, and will not be able to return it.

Writing to Me

Your sponsored child eagerly awaits a letter from you! We strongly encourage letter writing as it helps to build a special relationship. Even a short note or photograph is sure to bring a smile! Here are some tips to get started.

To send a card or letter by mail:

1. Place your letter in an unsealed envelope and label it with your sponsored child's full name, country and your name. (To avoid confusion, please do not put return addresses on the envelopes.)
2. Place the unsealed envelope into another envelope and mail it to the **national NPH USA office:**



Child's Full Name
c/o NPH USA
134 North LaSalle Street
Suite 500
Chicago, IL 60602-1036

SHORT ON TIME? SEND A QUICK NOTE ONLINE!

You can view your godchild's current photo, read their bio, and send a letter through our Sponsorship Portal. To enroll using your current email address, visit **nphusa.org/email**





What to Send

Children speak Spanish at all NPH homes, except Haiti where they speak Creole, but read and write in French. We will have your message translated if necessary before sending it to your child. Please allow 2-4 months for return correspondence from your sponsored child. If you wish to send something special to your sponsored child, please follow these guidelines:

- Postcards and photos are fun and educational for your sponsored child. However, please help us safeguard your family's privacy--do not include any direct contact information (including but not limited to: home, work or e-mail addresses) anywhere in your correspondence.
- Flat paper items such as bookmarks, pages from coloring books, stickers, flat magnets, photos, postcards and prayer cards are all acceptable. Items such as jewelry or anything that changes the shape of the envelope can be confiscated by customs officials in other countries.

Sponsor Correspondence Policy

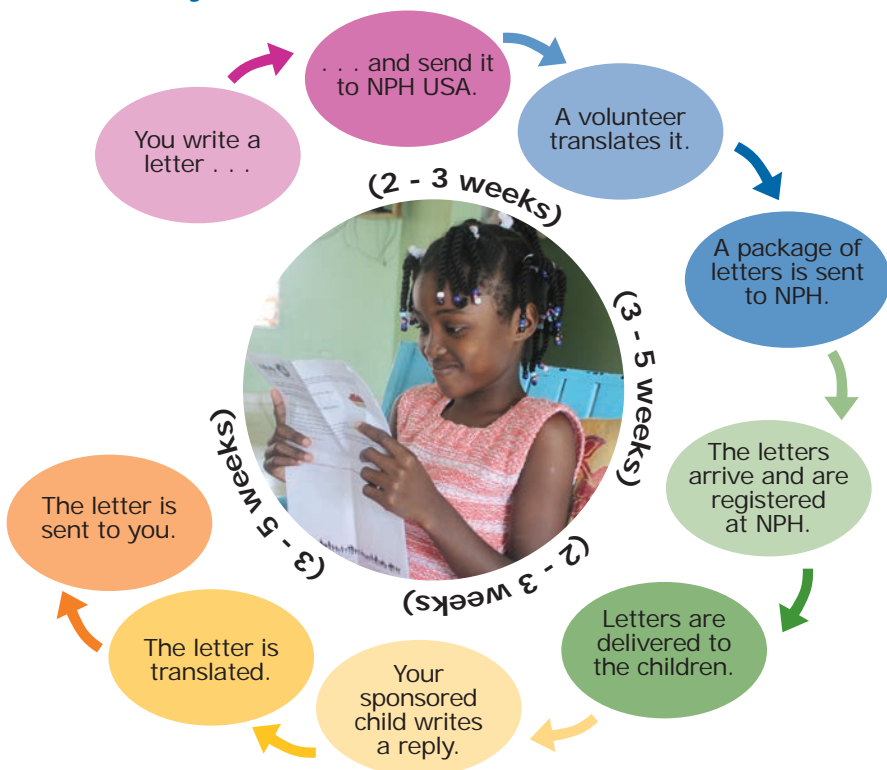
We are committed to protecting the safety, well-being and dignity of our children as well as respecting the privacy of our supporters.

- We do not allow children and sponsors to exchange contact information.
- We require that all correspondence be sent through our fundraising offices.
- We expect our sponsors to handle sensitive child information and child photos in a respectful and sensitive manner.
- We review all correspondence that is sent to sponsored children to ensure it does not include any content that is abusive, exploitive, inappropriate or threatening.
- We review letters to our sponsors to ensure they do not include inappropriate solicitation of funds or improper requests from our children.

Writing a Letter

Your sponsored child will eagerly receive your letter and he or she will write back to you. The process does take time, but it is well worth it! Normally it takes about 2-4 months to receive a reply to a letter you send. However, at certain times of the year, especially around Christmas, letters may take a few weeks longer. If you write in your sponsored child's native language, the "trip" will be shorter. Please be aware that Internet translation Web sites work well for translating one word; however, they do not work well for full letters. Letters translated using Internet translators will still be translated before they are sent to your sponsored child.

The Journey of a Letter



Receiving a Letter

If you have written to your sponsored child and have not received a response within four months, please contact us at 1-866-690-1703 or sponsorship@nphusa.org and we will look into it for you.



What to Write

These tips can help you make the most of writing to your sponsored child:

- Keep your letters simple. Write about things your sponsored child will understand, such as family, pets, hobbies and activities. Encourage your child's learning activities and special interests such as art, dance and sports.
- Ask specific questions and emphasize things you have in common. As time goes on, you will discover shared interests, perhaps a favorite school subject or a love of music.
- Because of your significance in the life of the child you sponsor, these common interests will enhance the child's self-esteem. Please avoid discussing material possessions, which will emphasize differences.
- Send pictures of yourself and your family. Such photographs will become prized possessions.
- Send postcards or photos of where you live and places you have visited.

Updates from Me

You will receive your first letter from your sponsored child within 2-4 months after your sponsorship begins. Throughout the year you will receive updates from his/her NPH home, including school progress reports, a Godparent's Day report and a Christmas card.

Godparent's Day ("Día del Padrino")

Every May, our children celebrate Godparent's Day to honor you. They give thanks for the love and support that you provide for them and all of their brothers and sisters at NPH. Activities vary from home to home and include Mass with prayers for Godparents, sports and games, and a special meal or treats, such as ice cream, for all of the children.



Helpful Phrases in Your Sponsored Child's Language

In Haiti, children speak Creole, but read and write in French. Spanish is the primary language at the other NPH homes. Letters to and from your sponsored child will be translated for you. The following phrases are provided in case you wish to include one or more.

Happy birthday! We hope you have a great day!

Creole: *Bon Fèt! M'espere w'ap pase yon bon joune!*

Spanish: *¡Feliz Cumpleaños! ¡Esperamos que tengas un buen día!*

Hello! How are you doing? We are all doing well.

Creole: *Bonjou! Kijan ou ye? Nou tout byen.*

Spanish: *¡Hola! ¿Cómo estás? Todos estamos bien.*

You are doing well in school. We are very proud of you. Keep up the good work.

Creole: *W'ap fe bon travay nan lèkol. Nou trè fyè efò w'ap fè. Kontinye bon travay.*

Spanish: *Vas muy bien en la escuela. Estamos muy orgullosos de ti. Que sigas trabajando así.*

It was nice to get your letter and picture. Thank you!

Creole: *Nou te kontan jwen lèt w'-a avek desèn'w. Mesi pou.*

Spanish: *Que bueno que recibimos tu carta y fotografía. ¡Gracias!*

Always try your best at whatever you do and never give up.

Creole: *Toujou fè gwo efò nimpòt kisa w'ap fè e pa janm dekouraje.*

Spanish: *Trata siempre de hacer lo mejor que puedas. Nunca te des por vencido.*

We are so happy to be your Godparents.

Creole: *Nou kontan paske nou paren'w-yo.*

Spanish: *Estamos muy felices de ser tus padrinos.*

We hope to be able to visit you sometime.

Creole: *Nou espere nou ka vizite'w yon jou.*

Spanish: *Esperamos poder visitarte algun día.*

Write back soon. We will be waiting to hear from you.

Creole: *Ekri byento. N'ap tan nouvel'w.*

Spanish: *Escribe pronto. Estaremos esperando oír de ti.*

Remember . . . we are always thinking about you.

Creole: *Pa bliye...n'ap toujour pense de'w.*

Spanish: *Recuerda . . . siempre pensamos en ti.*

▶ Translators are always needed! If you can help, e-mail us at sponsorship@nphusa.org. ◀



Visiting Me

Godparents are always welcome to visit their sponsored children! Spending time with the *pequeños* and touring the homes allows you to learn about NPH's unique programs and discover first-hand the effects that love, caring and acceptance have on children who once struggled to survive.

NPH USA organizes trips to the NPH homes on a regular basis, making arrangements for accommodations, ground transportation and activities. Prices and activities vary.



View our trip schedule at
nphusa.org/travels

Please contact your regional NPH USA office if you would like to visit your sponsored child. We will help facilitate the visit with the NPH home and make sure that your sponsored child knows that you are coming. We ask that you provide us with as much notice as possible so that we can make sure your sponsored child and the NPH home are prepared for your visit.

Your sponsored child may have the chance to visit the United States as a member of one of the NPH music and dance groups. If that is the case, we will contact you so that you will have an opportunity to meet him or her.

Visitor Policies

- Visitors taking photos or video of any NPH program are requested to photograph only children who are in the custody of NPH, unless prior authorization is approved. Please be respectful and do not take photos of participants in any community outreach program.
- Visitors and supporters are required to be cautious in sharing photos of our children in any social media platform. Do not use the real names of NPH children when sharing or posting photos to social media. For example, you can write, "My sponsored child from NPH Honduras" or "a boy playing soccer." NPH has the right to request that any media used of an NPH home, child or program be removed.



Your Sponsorship Account

Managing your Sponsorship Contributions

Donations to NPH USA, Tax ID #65-1229309, are tax deductible as provided by law. As a sponsor, you may choose to make your donations monthly, quarterly, semi-annually or annually. We invite you to choose the giving method that works best for you and your family.

- **ONLINE RECORDS ACCESS:** Our donor portal offers quick, secure and mobile-friendly access to your annual tax statement and giving history! You also can easily make changes to your billing and contact information, add to your sponsorship family, and more! Visit **donors.nphusa.org** today to get started!
- **AUTOMATIC GIVING:** Your sponsorship donation can be automatically deducted from your bank account or charged to your credit or debit card (Visa, MasterCard, American Express, or Discover). To sign up for automatic giving, please call us at 1-866-690-1703. To help us reduce costs incurred by sending multiple mailings, your credit or debit card bill or bank statement will serve as your receipt.
- **CHECK:** If you prefer to donate by check, please make checks payable to **NPH USA** and send them to our national office for processing. We will send you a receipt, which will also serve as a reminder for your next donation.

Changes to Your Sponsorship

Sponsorship is an ongoing commitment that continues for as long as you are able to give and as long as your sponsored child is in the NPH program. Sometimes children may leave NPH to reintegrate with their biological family, or leave NPH by choice when they are old enough to live independently. We will notify you as soon as we learn of this departure and ask that you consider supporting another child. Unfortunately, it is not possible to facilitate communication with a child who leaves the NPH program. If your sponsored child reintegrates with biological family and continues to receive support through our NPH OneFamily Program you will receive a quarterly Wellness Report for your sponsored child, but we regret we cannot facilitate letter writing.



We want to hear from you!

As a sponsor you are a valued part of our family. We want your experience to be as rewarding as possible. Your sponsorship team is here to assist you Monday through Friday from 9:00 a.m. - 6:00 p.m., CT at 1-866-690-1703 or by email at sponsorship@nphusa.org.



NPH USA.
Raising Children. Supporting Families.
Transforming Lives.

National Headquarters
134 North LaSalle Street
Suite 500
Chicago, IL 60602-1036

Toll-free 866.690.1703
Fax 312.658.0040
sponsorship@nphusa.org

nphusa.org

Cover photo: Mary Rafferty