



NPH USA
Raising Children. Transforming Lives.



Enabling Success

2016 Annual Report

Who We Are

Mission

NPH USA transforms the lives of abandoned and disadvantaged children with homes, healthcare and educational programs, making a positive impact in Latin America and the Caribbean.

NPH USA is a 501(c)(3) non-profit corporation, Federal Tax ID# 65-1229309.

Who We Serve

NPH USA supports Nuestros Pequeños Hermanos (NPH, Spanish for "Our Little Brothers and Sisters"), which is currently raising more than 3,200 boys and girls. An additional 2,300 students who live outside the homes receive scholarships, meals and health care. In 2016, more than 100,000 services were provided to children and adults through community outreach programs.

Where We Serve

Mexico

Opened: 1954

Children/youth fully supported: 743

Total services provided: 2,214

Features: The main home in Miacatlán has a clinic, chapel, farms, and primary and secondary schools. There are homes and a vocational high school in Cuernavaca, and a home in Matamoros.

Haiti

Opened: 1987

Children/youth fully supported: 909

Total services provided: 90,903*

Features: The main home is on 15 acres 5,000 feet above sea level in Kenscoff. It has residential cottages, a chapel, farm, and primary school (grades K-8). There is a pediatric hospital, plus rehabilitation centers, homes and schools in Tabarre.

Guatemala

Opened: 1996

Children/youth fully supported: 263

Total services provided: 466

Features: 25 acres of land, farm, homes, school (grades K-9), vocational workshops and clinic

Dominican Republic

Opened: 2003

Children/youth fully supported: 222

Total services provided: 2,130

Features: 50 acres of land, family-style homes, school (grades K-11) and gardens.

El Salvador

Opened: 1999

Children/youth fully supported: 228

Total services provided: 1,086

Features: School (grades K-9), vocational workshops, clinic, farm and a waste water treatment plant

Honduras

Opened: 1985

Children/youth fully supported: 504

Total services provided: 5,953

Features: School (grades K-9), vocational workshops, farm, special homes for disabled children and elderly adults, and a surgery center

Nicaragua

Opened: 1994

Children/youth fully supported: 171

Total supported population: 353

Features: School (grades K-11), vocational workshops farms and greenhouse

Bolivia

Opened: 2005

Children/youth fully supported: 113

Total services provided: 114

Features: School (grades 1-6), garden and clinic


Peru

Opened: 2004

Children/youth fully supported: 105

Total services provided: 107

Features: 37 acres of land, solar water heaters, water treatment system, playground, clinic, and therapy center

 National Director was raised at an NPH home.

Totals are as of December 31, 2016. Total services provided includes children and youth fully supported, community children, youths and adults who receive support by either attending our onsite schools, receive scholarships, receive in-kind donations and or medical/social services.

*Includes St. Damien Pediatric Hospital.

“Hoping means seeing
that the outcome you want
is **possible** and then
working for it.”

Bernie S. Siegel



Top: NPH Mexico / Joey Schiappa; Above: NPH Haiti / Denso Gay

2016 Annual Report *Contents*

| | |
|--|-----------|
| From the President/CEO and National Board Chair | 4 |
| Treasurer’s Report | 5 |
| Financial Highlights | 6 |
| 2016 at a Glance | 7 |
| 2016 Highlights | 8 |
| Making an Impact | 9 |
| The Seattle Institute | 10 |
| International Volunteer Program | 11 |
| Child Sponsorship | 12 |
| Special Events | 12 |
| Trips to Our Homes | 13 |
| Local Volunteers | 13 |
| In-Kind Gifts | 14 |
| Matching Gifts | 14 |
| Legacy Gifts | 14 |
| Tribute Gifts | 14 |
| St. Damien Pediatric Hospital Fund | 15 |
| Fr. Wasson Legacy Endowment, Inc. | 16 |
| NPH USA Leadership | 18 |
| National Board of Directors | 18 |
| Regional Boards of Directors | 19 |
| How to Get Closer/Contact Information | 20 |



“Education is not the filling of a pail, but the lighting of a fire.”

William Butler Yeats

From the National Board Chair and NPH USA CEO

We believe that the greatness of NPH does not rest solely on the organization’s past accomplishments but also on the services NPH provides for children in need today, tomorrow and every day in the future. As with any annual report, we want to share with you the outstanding achievements of the past year and highlight several of the exciting initiatives which have recently been developed, all of which was accomplished because of you, the donor.

First, we are excited to report that NPH USA’s total contribution to the work of NPH International (NPHI) and the homes it supports, was \$16.8 million in 2016. This not only is a direct acknowledgement of your support but also a recognition of the critical role you have in raising children and transforming lives at NPH. The number of lives you have changed is not simply reflected in the amount of children who called NPHI home in 2016. A more accurate reflection of the lives you affected must also include all those who received services through NPHI’s community outreach programs. When we add together all the lives NPHI shapes and nurtures, your generosity impacts tens of thousands of people.

2016 represents the first full year we began implementation of a variety of new strategic initiatives. Reflecting a similar approach to how we encourage you, our supporters, to get to know our homes, we are aspiring to develop more personal relationships with you and we are working to engage you at various levels. This includes developing and strengthening board member involvement at the regional and national level which has led to new fundraising opportunities and bolstered our community presence.

We hope you will take a moment to reflect on the fact that as an NPH USA supporter, you are a member of a uniquely global family that extends all around the world from New Zealand to El Salvador and Europe to the USA. We are all committed to extending the NPH message of hope, love, and family to our little brothers and sisters. Given the economically challenging times that have affected our European counterparts, NPH USA has had to step-up our efforts and commitment to the children of NPHI. Thanks to you, we were able to increase our revenue by 17% in 2016. Your involvement and commitment is critical to this success.

Let us close as we began. The greatness of NPH does not rest on the organization’s past accomplishments but also on the services NPH provides for the children of Latin America and the Caribbean today, tomorrow and every day in the future. Providing for our children can only happen because of you.

On behalf of the children of NPH, we send their love and gratitude.

Nestor Jaramillo
Chair, NPH USA National Board of Directors

A. Frank Donaghue
NPH USA President and Chief Executive Officer



2016 Treasurer's Report

Every year, NPH USA has been able to increase the amount of support provided to NPH International thanks to the generosity of our loyal donors. In 2016, this was no different. NPH USA completed another successful year recording \$16.8 million in overall program support benefiting over 3,200 children. Of this \$16.8 million, \$13.9 million was in the form of cash and \$2.9 million was in the form of in-kind donations. Notably, NPH USA provided an additional \$2.5 million in cash support to NPH International when compared to 2015.

NPH USA has a healthy program expense ratio of 81%, which improved from 75% in 2015. This ratio is a common performance metric that charitable organizations use to measure their effectiveness, and it looks at the percentage of overall expenses that is devoted to charitable programs. NPH USA's ratio continues to compare favorably to similarly sized organizations and keeps us in excellent standing with the major U.S. fundraising rating agencies. We also strengthened our cash position by \$1.1 million, ending 2016 with \$4.4 million of free cash. This healthy cash position allows NPH USA to guarantee increased funding to NPH International in the upcoming year.

Behind the millions of dollars of support that NPH USA provided in 2016, were our generous donors who continue to place a high value on our children's future. This shared belief in the transformational power of family allows thousands of children to grow to embrace their future and reach their full potential. With your help, NPH USA will continue to grow the financial support for our children.

On behalf of the children of NPH, thank you for your support.

John Price
Treasurer, NPH USA National Board of Directors

Your support enables
our children to
transcend poverty
and reach their
full potential.



NPH Honduras / Amanda Thomas



2016 Financial Highlights

The financial data on this page includes combined data for NPH USA and The Father Wasson Legacy Endowment, Inc. (see page 15). It has been extracted from our 2016 Audited Financial Statements, which are available upon request.

Assets and Liabilities

ASSETS

| | |
|--------------------------------|-------------|
| Cash and Cash Equivalents | \$5,816,544 |
| Receivables and Prepaids | 1,101,690 |
| Investments and Endowments | 13,168,550 |
| Beneficial Interests in Trusts | 2,716,656 |
| Fixed Assets (Net) | 145,941 |
| Other Assets | \$32,948 |

| | |
|---------------------|---------------------|
| TOTAL ASSETS | \$22,982,329 |
|---------------------|---------------------|

| | |
|----------------------------|--------------------|
| CURRENT LIABILITIES | \$1,411,036 |
|----------------------------|--------------------|

NET ASSETS

| | |
|-----------------------------------|--------------|
| Unrestricted Net Assets | \$21,571,293 |
| Temporarily Restricted Net Assets | 3,593,723 |
| Permanently Restricted Net Assets | 4,534,562 |
| | 13,443,008 |

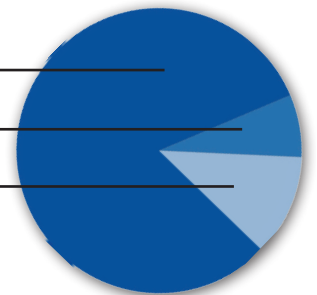
| | |
|---|---------------------|
| TOTAL LIABILITIES AND NET ASSETS | \$22,982,329 |
|---|---------------------|

2016 Functional Expenses: \$20,695,593

Program Services 81% (\$16.8M) _____

Management & General 7% (\$1.4M) _____

Fundraising 12% (\$2.4M) _____



2016 Sources of Revenue: \$22,303,420

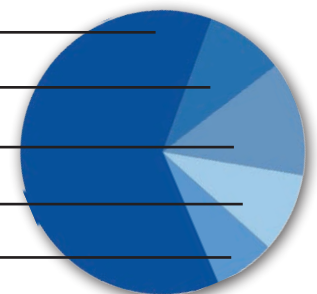
Contributions 62% _____

Bequests 9% _____

In-Kind Donations 13% _____

Special Events 9% _____

Investments 7% _____



2016 At a Glance



3,258
children
fully supported



118
new arrivals

246
vocational
certifications



231
year of service
youths



203
high school
graduates



34
university
graduates



2,328

external students
supported through
educational programs

2,058
children from low-income
households at NPH schools

270
youth on scholarship at
community schools

Community Outreach

All of the NPH homes assist people in their communities in a variety of ways. The homes with their own schools offer scholarships to local children and those with clinics provide health care services. Other programs include offering vocational education to unemployed adults in the Dominican Republic and providing child daycare to working mothers in Honduras. In addition, the homes provide disaster relief when needed.

100,068

services provided through
community outreach programs

\$ 533,000

estimated value of supplies given to
Hurricane Matthew victims in Haiti



2016 Highlights

Bolivia



Inaugurated second school building

Dominican Republic



Launched a Montessori program

El Salvador



Created a cooking workshop for special needs students

Guatemala



Improved Family Bakery business

Haiti



Expanded agricultural program

Honduras



Hermano Mayor ("older brother") became home's full-time physician

Mexico



Began redesigning classrooms to be more technologically oriented

Nicaragua



Started construction of secondary school

Peru



Completed a bakery - the first vocational workshop



Meeting Oprah

Stefan Feuerstein, National Director of NPH Honduras, was named to the inaugural OWN: Oprah Winfrey Network "SuperSoul 100" list. Inspired by OWN's Emmy-winning series *SuperSoul Sunday*, the list recognizes remarkable individuals in five categories: Soul Creatives, Soul Entrepreneurs, Soul Givers, Soul Igniters, and Soul Teachers. In April, Stefan had the chance to meet Oprah and his fellow SuperSoul 100s.

Making an *Impact*

SEATTLE INSTITUTE
CHILD SPONSORSHIP
EVENTS **VOLUNTEERS**
SPECIAL GIFTS TRIPS

Anna Gunter of Cottage Grove, MN, served as Visitor Coordinator at NPH Dominican Republic from July 2014 – August 2016 and is now a member of the Upper Midwest Region's Associate Board. Photo by Isabel Puchades

Preparing for Lives of Service

The Seattle Institute was founded in 2011 to continue Father Wasson's legacy by developing a future generation of leaders for our NPH homes. The curriculum is based on principles of servant leadership and grounded in our NPH philosophy.

Each participant:

- Lives with a homestay
- Works with an intergenerational mentor
- Studies intense English at a community college
- Participates in job-shadowing, workshops, service activities, and more
- Is coached in their personal growth by the program director and supporters

Special thanks to the donors who make this program possible, including Costco and many individuals and families throughout the Northwest.



A member of the program's charter class, Digyana is now Coordinator of Montessori Programs at NPH Honduras.
Photo by Amanda Thomas

26 total graduates
since 2011

16 attending
university

12 working
full-time

8 employed
by NPH

Class of 2016 - 2017



SAMUEL - HAITI

Electro-mechanical degree

"Eventually I want to study law to work for children in poverty."



SARAVIA - HONDURAS

Nutrition student

"I hope to grow as a person and to be a strong representative of Honduras."



ROXANA - EL SALVADOR

Psychology student

"I am eager to take advantage of this opportunity for my own personal growth."



JIMMY - NICARAGUA

Political science and international relations student

"A leader is empathetic, democratic, enthusiastic, innovative, creative and patient."



DAVID - GUATEMALA

Psychology student

"I want to learn more about how to support people."



MARIELA - MEXICO

Practicing orthodontist

"I am excited to continue developing my own leadership skills while learning new ones."



Joey Schiappa

“Before I came, I didn’t realize the **impact** I could have on the kids, or the impact they could have on me.”

Danica Sanders of Waterford, CT
Nurse at NPH Mexico

International Volunteer Program

Give a year, gain a lifetime of love.

The NPH USA International Volunteer Program sends qualified individuals, married couples and families to support the staff and children living at the NPH homes. Volunteers commit to at least one year of service, live on-site and hold a full time job. They are provided with room and board, health insurance, access to basic medical care, and a modest stipend, but pay for their own travel expenses.

nphusa.org/ivp

43 U.S. volunteers served for six months or more

| | |
|--|----|
| Education | 10 |
| Caregivers | 8 |
| Speech Language Pathologists | 2 |
| Social Work and/or Women’s Empowerment | 2 |
| Healthcare | 10 |
| Administration | 7 |
| Communication | 4 |

\$ 100,000 estimated salary savings

Right: Kara and Michael Lyons of Ubly, MI, and Arlington Heights, IL, respectively are a married couple that served at NPH Guatemala; Alex Hanel of Minneapolis is serving at NPH Honduras



Vanessa French



Enabling Success • nphusa.org



Cheryl Cook of Scottsdale, AZ, at NPH Mexico with one of the six children she sponsors



Jerry Wilharm of Maryville, TN, with his goddaughter at NPH El Salvador



The Midwest's 2016 Football Legends Classic featuring Hall of Famers and former Chicago Bears raised over \$226,000.



The Northwest Region's annual Gala Dinner & Auction raised close to \$400,000 in 2016.

Child Sponsorship Program: *Connecting Supporters and Children*

The NPH USA Child Sponsorship Program connects caring people in the U.S. with individual children at the NPH homes. Sponsors (Godparents) generously give ongoing financial support to provide for the children's daily care. They also provide friendship that helps the children develop self-esteem and reinforces the values they are taught at NPH.

nphusa.org/sponsorship

| Region | Sponsorships | Revenue |
|------------------------|--------------|---------------------|
| Northwest | 1,673 | \$ 846,535 |
| Southwest | 1,803 | \$ 805,623 |
| Upper Midwest | 1,438 | \$ 748,996 |
| Midwest | 1,751 | \$ 731,754 |
| Mid-Atlantic/Northeast | 944 | \$ 469,864 |
| Southeast | 274 | \$ 125,835 |
| TOTAL | 7,883 | \$ 3,728,607 |

Special Events: *Raising Awareness and Funds*

The regional offices of NPH USA organize local events to raise awareness of and funds for our work. Events vary from fun runs to formal galas. In addition, supporters plan and host their own events, such as concerts and cocktail parties, and giving campaigns to benefit the children of NPH. In 2016, supporter events and campaigns yielded more than \$97,000.

nphusa.org/events

| Region | Events | Attendees | Net Profit |
|-----------------|-----------|---------------|---------------------|
| Northwest | 10 | 2,520 | \$ 564,548 |
| Southwest | 5 | 1,056 | \$ 268,508 |
| Upper Midwest | 9 | 1,047 | \$ 369,359 |
| Midwest | 9 | 5,048 | \$ 287,542 |
| Mid-Atlantic/NE | 15 | 1,925 | \$ 261,787 |
| TOTAL | 48 | 11,596 | \$ 1,733,743 |

Table does not include supporter events or campaigns.

Trips to Our Homes: *Seeing Our Support in Action*

One of the things that makes NPH USA unique is we give you the opportunity to meet the children whose lives you are transforming with your support. We organize trips to our homes on a regular basis, making arrangements for transportation, accommodations and activities. Some trips include work projects, such as gardening or constructing facilities.

nphusa.org/travel

| Country | Trips | Participants |
|--------------------|-----------|--------------|
| Dominican Republic | 3 | 63 |
| El Salvador | 1 | 21 |
| Guatemala | 8 | 184 |
| Honduras | 4 | 60 |
| Mexico | 6 | 90 |
| Nicaragua | 5 | 54 |
| TOTAL | 27 | 472 |



Members of the Mid-Atlantic/Northeast Junior Board visit NPH Dominican Republic.



Immersion trip participants plant trees at NPH Guatemala.

Local Volunteers: *Sharing Skills and Time*

Volunteers are essential to the success of NPH USA and help in a number of ways, including:

- Serving on boards and committees
- Assisting with office tasks
- Translating letters to/from child sponsors
- Working at special events
- Hosting visiting children

nphusa.org/vlocal

| Region | Volunteers | Hours |
|------------------------|------------|---------------|
| National | 38 | 700 |
| Northwest | 236 | 2,253 |
| Southwest | 75 | 1,417 |
| Upper Midwest | 193 | 3,076 |
| Midwest | 86 | 2,015 |
| Mid-Atlantic/Northeast | 196 | 3,840 |
| Southeast | 6 | 100 |
| TOTAL | 830 | 13,401 |



Volunteers help at the annual Upper Midwest gala.



Volunteers in Chicago send report cards to child sponsors.



“The influence of each human being on others in this life is a kind of **immortality.**”

John Quincy Adams

Legacy Gifts

Each year, we are both saddened and bolstered by the generosity of individuals who cared so much for the children of NPH that they chose to provide for them through their charitable estate plans. As we say good-bye to the friends who remember the *pequeños* in this way, we offer our deep condolences to their families and friends.

nphusa.org/legacy

12 } \$1,959,149
gifts } legacy gifts total

Tribute Gifts

Throughout the year, many donors honor a friend or loved one by making a gift in their name. These meaningful tributes are made for birthdays, holidays, memorials, to say thanks or for other reasons, and they help support the thousands of children in our care.

nphusa.org/tribute

317 } \$66,724
gifts } tribute gifts total

In-Kind Gifts

We are grateful to the generous individuals, companies and organizations that donate merchandise (primarily medical supplies and medicines) to augment cash donations and help meet the daily needs of our homes. We also thank the generous partners that donate services, items and gift certificates for special events.

nphusa.org/inkind

\$2.8 million | \$216,859
value of products and services | value of items for
donated for our homes | regional special events

Matching Gifts

Many employers match charitable donations made by their employees and even their retirees, increasing their impact on our children's lives.

nphusa.org/match

288 | 70
individuals | companies
\$149,303
matching gifts total

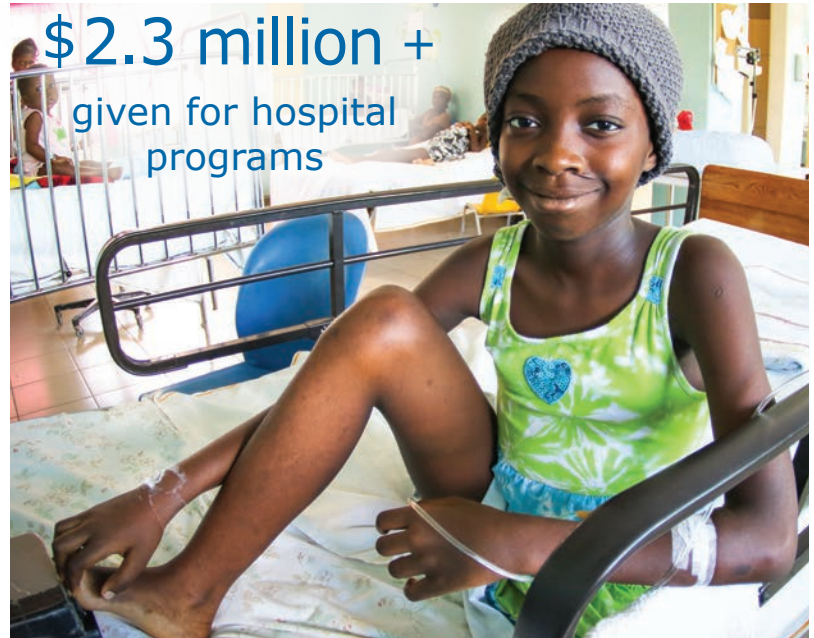
St. Damien Pediatric Hospital Fund: Saving Lives in Haiti

Contributions to NPH USA's St. Damien Pediatric Hospital Fund support the premier children's facility in Haiti. It offers long-term care as well as emergency and outpatient services.

In 2016, the Fund provided the hospital with \$2,300,951, over one-third of its total funding.

nphusa.org/stdamien

15,224 consultations
9,297 vaccinations
4,034 admissions
2,089 babies delivered
1,102 oncology consultations
477 local people employed



\$2.3 million +
given for hospital
programs



St. Damien's was able to offer continuous care during a strike at all governmental hospitals from March to August 2016. During the first three months, the hospital experienced up to a 25% increase in patients. The support of NPH USA St. Damien Fund donors was essential to withstand this challenge and help save thousands of lives throughout the year.

80,000
total services



There are approximately 300 pediatricians and three million children under five years of age in Haiti. Developed in 2013 as part of the St. Damien Collaborative for the Improvement of Pediatrics, the hospital's Residency Program is helping to address this critical shortage. In 2016, the program proudly graduated our first group of six pediatricians trained at our facilities.

\$100,000 +
raised by the Collaborative



St. Damien's is currently the only hospital able to offer heart surgery in Haiti. In 2016, there were 11 surgeries and more than 150 screenings. The program is made possible through a wonderful partnership with Haiti Cardiac Alliance, Gift of Life International and a foundation from Health City Hospital in the Cayman Islands.

11  **150**
surgeries screenings

Fr. Wasson Legacy Endowment, Inc.

Fr. Wasson Legacy Endowment, Inc. (FWLEI, Federal Tax ID #91-2005679) is a nonprofit, nonsectarian 501(c)(3) organization incorporated in Delaware in 1995. The purpose and mission of FWLEI is to create a substantial and growing financial corpus (the Endowment) that will generate income and help provide long-term financial stability for Nuestros Pequeños Hermanos.

Directors are nominated by NPH USA and elected to represent geographic areas paralleling the regions of the NPH USA offices. The Executive Director of NPH International and CEO of NPH USA are ex-officio voting members of the Board of Directors. The NPH USA offices and NPH Mexico raise funds for the Endowment. Donors receive receipts from NPH USA, which may be used to obtain deductions from U.S. taxes as provided by law. FWLEI may make an annual distribution from earnings to NPH USA for support of the NPH homes.

2016 FWLEI Board of Directors

Charlie Swope, *President*

Bob Bartels
Frank Donaghue
Earl P. Frye
R. Jean Gray
Mary Guillame
Nellie Johnson
David Seidel
Claire Topp
John Zicarelli

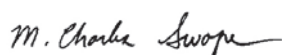
President's Report

The Father Wasson Legacy Endowment, Inc. (FWLEI) was created in 1995 to establish a source of long term, secure funding to ensure that the work begun by Father Wasson to transform the lives of orphaned and disadvantaged children in Latin America and the Caribbean will continue far into the future. The endowment's funds are invested for long-term growth and each year a portion of them is distributed to NPH USA for the support of Father Wasson's organization, Nuestros Pequeños Hermanos (NPH). FWLEI is, however, its own, separate 501(c)(3) charitable organization and, as such, contributions to it are tax deductible. Its assets are professionally managed at a large New York Investment bank whose work is overseen by the FWLEI board of directors and its investment committee.

The endowment began 2016 with net assets of \$13,233,343. From this amount the board was able to distribute \$659,000 for the support of the children served by NPH. Even with this distribution the endowment assets ended the year having increased to \$14,079,399. This allowed the board to authorize a distribution in early 2017 of \$680,000. While the value of the endowment assets and the amounts which can be distributed while safeguarding the endowment principal are dependent on the vagaries of the stock and bond markets, the board is hopeful that it can continue to increase the support the endowment provides to NPH. Since 2010 FWLEI has distributed \$4.3 million for the benefit of the NPH children.

FWLEI provides an ideal instrument for donors who wish to support the work of NPH but want their contributions to be more than a one-time gift. Donors who give to the endowment leave a legacy that will continue to provide support into the indefinite future. This type of gift may be especially appropriate for planned gifts and estate distributions. FWLEI offers donors the opportunity to contribute to the long-term sustenance of NPH and ensure that future generations of children are given the opportunities that NPH provides. Contributions to FWLEI are made via NPH USA personnel. For further information about the endowment please get in touch with your NPH-USA Regional Director or contact one of the FWLEI board members (listed at left).

Thank you for your support of this important component of the financial well-being of the NPH organization.



M. Charles Swope
President, FWLEI

Fr. Wasson Legacy Endowment, Inc.

2016 Portfolio Management Report

The portfolio of the Father Wasson Legacy Endowment, Inc. (FWLEI) is managed by the Ziminski Group of Financial Advisors at the investment banking firm Morgan Stanley. Vic Ziminski has managed the portfolio for many years and has produced excellent results, outperforming the relevant benchmarks in nine of the last ten years.

The value of the portfolio increased in 2016 from \$13.2 million at the beginning of the year to \$14.1 million at year end after distributing \$659,000 to NPH USA for the use of Nuestros Pequeños Hermanos (NPH). This is a rate of return of 11.37%, far in excess of the benchmark return of 6.09%.

At year end portfolio assets were allocated 65.1% to a diversified collection of equities, 26.1% to fixed income securities and 7.4% to cash. Income from dividends and interest was \$307,266.

All in all 2016 was a very good year for the portfolio. The board wishes to express its appreciation for these results to Vic Ziminski and his team at the Ziminski Group and to the FWLEI Investment Committee for its oversight.

The financial data on this page has been extracted from the 2016 FWLEI Audited Financial Statements, which are available upon request.

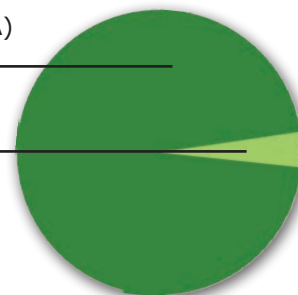
Assets and Liabilities

| | |
|---|---------------------|
| ASSETS | |
| Cash and Cash Equivalents | \$1,150,391 |
| Receivables | 16,000 |
| Investments and Endowments | 13,035,339 |
| TOTAL ASSETS | \$14,201,730 |
| CURRENT LIABILITIES | |
| | 0 |
| NET ASSETS | \$14,201,730 |
| Unrestricted Net Assets | 0 |
| Temporarily Restricted Net Assets | 3,325,378 |
| Permanently Restricted Net Assets | 10,876,352 |
| TOTAL LIABILITIES & NET ASSETS | \$14,201,730 |

2016 FWLEI Expenses: \$685,583

Program Services (to NPH USA)
96% (\$659,000)

Management & General
4% (\$26,583)

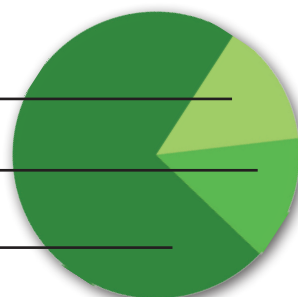


2016 FWLEI Revenue: \$1,509,668

Contributions
14%

Interest/Dividends
14%

Realized and Unrealized Gains
72%



NPH Dominican Republic / Isabel Puchades





NPH USA Leadership

A. Frank Donaghue

President and Chief
Executive Officer

Katie Hultquist

Regional Director
Northwest

Chuck Allworth

Regional Director
Midwest

Susan Davis

Regional Director
Southeast

Christian Delgado

Chief Financial Officer &
Chief Operating Officer

Stephanie Pommier

Regional Director
Upper Midwest

Monica Henry

Regional Director
Mid-Atlantic/Northeast

Jennifer Rayno

Director, St. Damien
Pediatric Hospital Fund

Molly Boyum

Vice President
Development

2016 National Board of Directors

NPH USA is governed by a volunteer Board of Directors. Members have diverse professional backgrounds and expertise, but each actively works to raise funds for and awareness of NPH USA.

Chair

Nestor Jaramillo, Jr.

Managing Director,
Craig-Hallum Capital
Group

Treasurer

Marnix Guillaume

Associate, Hanover
Stone Partners

Patricia Flatley

Owner, MB&T

Miguel Venegas

Executive Director, NPH
International

Vice Chair

John Shinsky

Professor & Department
Chair, Grand Valley
State University

At-Large

Nellie Johnson

CEO, CareChoice
Cooperative

John Iberle

Executive, The John
Buck Company (retired)

Dennis Walsh

Senior VP & Operations
Manager, Midland Paper

Secretary

John Deinhart

Director of Stewardship
and Strategic Planning,
Catholic Diocese of
Knoxville

Judy Barrett

Owner, Chateau
Montelena

Rafael Jaramillo

President, Emerson
Process Management's
Daniel Measurement &
Control

Tina Wells

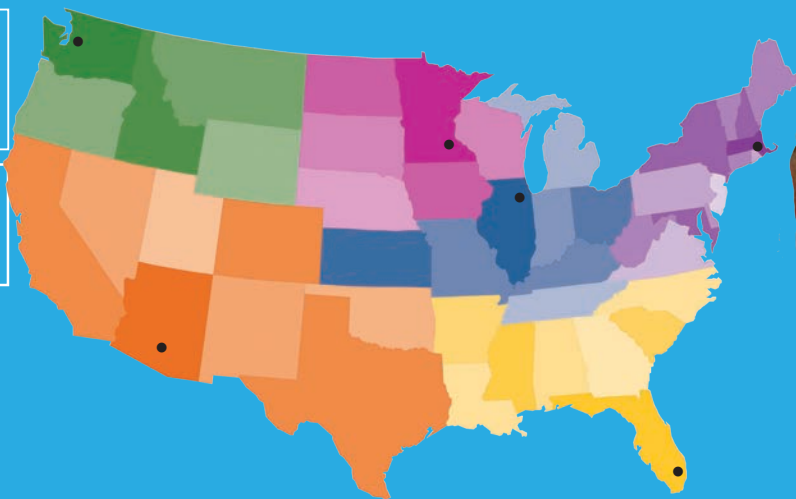
CEO & Founder, Buzz
Marketing Group

John Price

Managing Director,
Americas Market
Intelligence, LLC

Jim Connelly

Private Consultant
Former COO, Xpedx



NPH USA was founded as Friends of Our Little Brothers in 1965. In addition to our national office located in Illinois, we have six regional offices, each of which has its own volunteer Board of Directors.

2016 Regional Board Members

Northwest

Mary Jo Bruckner, *Chair*
 Cathy Callans
 Ann Connolly
 Malia Cranmer
 Doug DeBen
 Katie Doemland
 John & Mona Fonseca
 Sabrina Gaughran
 Annika & Lee Grever
 Chris Hartinger
 Ed Holtgraves
 Kristen Kelly
 Debbie & Pat McCormick
 Joanna Mummert
 Gail Taylor
 Susana Valencia
 Larkin VanDerhoef
 Kavita Varma-White

Upper Midwest

Dan Ament
 Ann Arnold (emeritus)
 Chris Heim
 Richard Jordan
 Lulu Daly
 Clara Grove
 Dan Hoeffel
 Mary Kasel
 David Miller
 Ruth Miller
 Sarah Molitor
 Kenneth Richelsen
 Rose Schaffhausen

Mid-Atlantic/ Northeast

Eddie Bernau
 Deacon Daniel Burns
 Deacon Tim Donohue
 T. Christopher Donnelly
 Patricia Flatley
 Anne Geraghty
 Winnie Henry
 Gerry McGrath
 Gerry Roche
 Deacon Charles Sullivan
 Rita K. Walsh

Southwest

Anthony Austin, *Chair*
 Stephen Berney
 Martha Fogler
 Joe Klag
 Mark Lindbloom
 Molly Mahoney
 Rob Messer
 Joe Myers
 Teresa Prado-Ventoza

Midwest

Chris Ambroso
 Beth Ashton
 Kelly Corley
 Pete Dougherty
 Scott Lane
 Jill Adams McDonough
 Roly Orama
 Liz Prior
 Tom Scherschel

Southeast

John Price, *Chair*
 Frank Cascante
 Susan Davis
 Benedicte Gutton
 Tomas Hauff
 Dr. Robert Jacobson
 Susan Matos
 Jorg Nowak
 Ramiro Prudencio
 Theresa Rice



Get Closer

GIVE

Provide food, shelter, clothing and education to our children

SPONSOR

Establish a personal connection with a child

VOLUNTEER

Help in a regional office or at an NPH home location

VISIT

Experience life at a home and spend time with the children

For more information on how to help, please visit nphusa.org
or contact your regional office.

Donations to NPH USA, Federal Tax ID# 65-1229309, are tax deductible as provided by law.



134 North LaSalle Street, Suite 500 | Chicago, IL 60602-1036
Toll-free 866.690.1703

Regional Offices

| | | | |
|----------------|--------------|-------------------------|--------------|
| Northwest: | 425.646.3935 | Midwest: | 312.386.7499 |
| Southwest: | 480.967.9449 | Mid-Atlantic/Northeast: | 617.206.4940 |
| Upper Midwest: | 651.482.1703 | Southeast: | 305.663.6211 |

nphusa.org